

TRUFIRE™ ULTRAFLEX PILOT AND BURNER

High-Heat Release and Maximum Flexibility

Easy to install and able to reliably light in wet conditions, the John Zink TruFire™ UltraFlex pilot and burner provides reliable performance as both pilot ignition and a high-heat release option for overall system flexibility. Our innovative high-heat release gives you the ability to fill the gap between burner turndown and typical output of the pilot, providing a better way to fine-tune your system's performance. The TruFire pilot is made with stainless steel to minimize corrosion and its flexible design offers your choice of a fixed or retractable system. In addition, the system allows you to add a sightport or even a scanner directly to the pilot for safe, reliable flame verification.

AT A GLANCE

High-Heat Release and Flexibility

- Wide range of heat release offers flexible operation
- Heat release capacity from 200,000 Btu/hr to 13.4 MMBtu/hr
 - Unit startup and shutdown control
 - Refractory dry out applications
 - Self-contained burner

Safety and Flame Verification

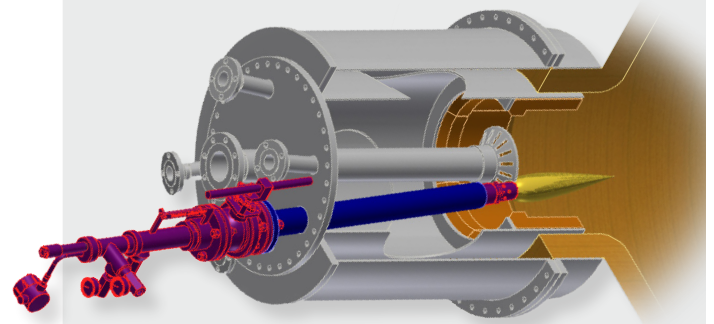
- Robust, stable flame ensures burner ignition and flame detection
- Sightport / scanner option available with direct line of sight on the pilot for flame confirmation

Pilot Ignition

- Application of our proven High Energy pilot ignition
 - Uses compressed air for improved stability in high-draft and pressurized applications
- Safely retractable and removable from the burner even during burner operation (manual or pneumatic retraction)



One Product. Many Applications.



Due to its flexible heat release option, the TruFire UltraFlex can be used in a wide range of applications, including:

- Start-up burner
- Refractory cureout burner
- Burner pilot
- Gas / air preheater burner

TRUFIRE™
ULTRAFLEX

HIGH ENERGY FEATURES

- High Energy probe is not affected by moisture and will spark even when completely immersed in water
- Powerful capacitance discharge spark provides more reliable ignition than a conventional spark plug igniter
- A fixed / non-adjustable spark gap ensures proper installation and reliable spark

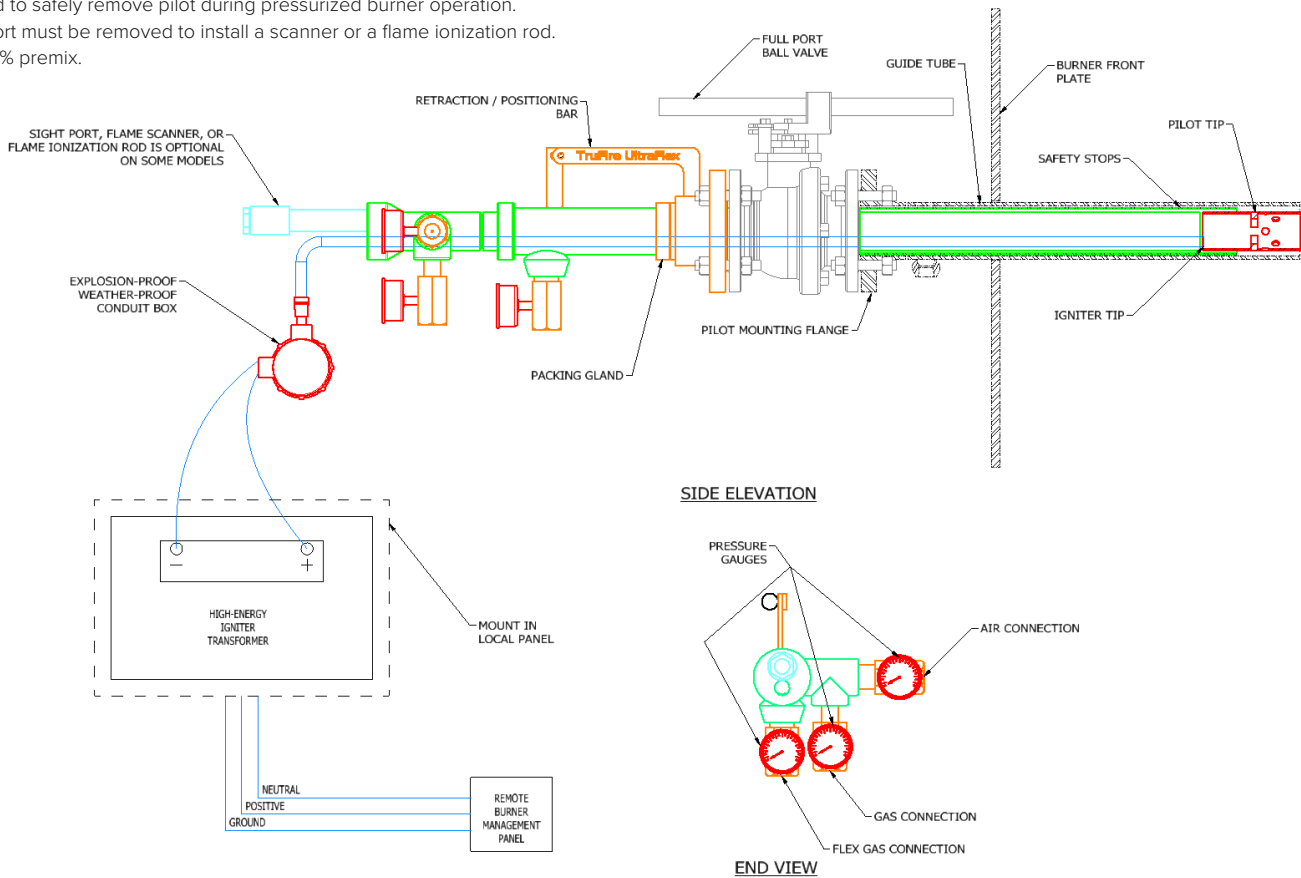
SPECIFICATIONS AND OPTIONS

Pilot Type	Min. Guide Pipe Size, Sch 80 Or 40	Heat Release Btu / hr	Compressed Air Required, SCFM At 10 psig	Retractable with Isolation Valve ¹	Scanner Option	Sight Port Option ²
TruFire UltraFlex	3"	200,000 – 13,500,000	70 ³	Yes	Yes	Yes

¹ Manual retraction is standard, pneumatic retraction is also available. Isolation valve must be installed to safely remove pilot during pressurized burner operation.

² Sight port must be removed to install a scanner or a flame ionization rod.

³ Not 100% premix.



ELECTRICAL SPECIFICATIONS

Input voltage options

120 VAC / 50-60 HZ / Single Phase
 240 VAC / 50-60 HZ / Single Phase
 24 VDC

Amperage requirement

0.35 AMPS - AC
 2 AMPS - DC

Spark rate

Two sparks per second

For more information about the TruFire UltraFlex pilot and burner, contact: info@johnzink.com.

Global Headquarters // Tulsa, OK, USA // +1-918-234-1800 // To locate an office in your region, visit johnzink.com/contact.