

How We Manage Water

The Savannah River Mill uses water to make tissue, towel and napkin products. The mill uses water from two sources – the Savannah River and the Floridan aquifer. The water is treated prior to use and then treated again after use so that it can be returned to the Savannah River.

We minimize and manage our water use in several ways.

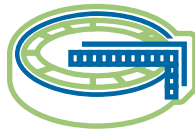


Best Practices

The Savannah River Mill uses best practices in our manufacturing processes to help minimize the amount of water used to make our products. These best practices include:

- Using advanced technology integrated into our papermaking process enabling us to reuse water multiple times, which reduces the amount we withdraw.
- Working to reduce our overall use of water, which results in reduced withdrawals and discharges.

We continuously measure our water usage to ensure that we are operating in a way that minimizes our environmental impact, meets our permit limits and protects our employees and neighbors.



Pollution Control Equipment

Pollution control devices are designed to reduce or eliminate the wastewater emissions from our processes and help the mill meet or do better than the limits set in our permits.

- The Savannah River Mill operates an advanced wastewater treatment plant that operates at greater than 98% efficiency removing solids and other organic materials. Solids are measured by a test known as "Total Suspended Solids" (TSS), and organic material that can be broken down is measured by a test known as "Biochemical Oxygen Demand" (BOD).
- Clarifiers are used to settle and remove solids.
- Large aeration basins use oxygen and microbes to break down and remove organic materials.
- The treatment plant is run by operators licensed by the state of Georgia.



Permits

Federal and state environmental agencies issue permits that allow our mill to withdraw a designated amount of water from the aquifer and the river and to discharge treated wastewater that is generated by our processes. The agencies set limits for these uses and treatment at levels that protect people and the environment. We challenge ourselves not only to meet our permit requirements but also to perform better when we can.

Our top wastewater emissions are:

- Biochemical Oxygen Demand (BOD)
- Total Suspended Solids (TSS)

For more information see:

www.epd.georgia.gov/watershed-protection-branch-lists

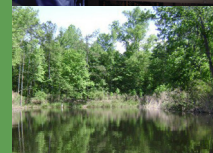
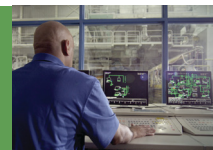




Proudly making quality products with tomorrow in mind



Being good stewards by protecting our people, our environment and our community



- Serve customers in both retail and away-from-home markets
- Manufacture products primarily from recycled fiber
- Operate five of the world's 12 largest tissue paper machines
- Make strategic, long-term capital investments for operational efficiencies and operational excellence to compete in the global marketplace

- Committed to demonstrating excellence in safety and environmental performance
- Contribute to global recycling efforts by diverting more than 400,000 tons of wastepaper from the waste stream each year
- Earned and maintain the Wildlife Habitat Council's Gold Level Conservation Certification

Serving as Effingham County's largest private employer



Committed to making a difference in our community



- More than 900 SRM team members, 40% of who live in Effingham County
- 2,200 acres, with 75 acres of manufacturing and warehouse space under roof
- \$1.7 million in local annual payments to local tax digest, more than \$92 million annual payroll, more than \$100 million annual impact on the local area
- Operate in 12-hour shifts 7 days a week, 365 days a year

- An active community partner with Effingham County Schools and Effingham College and Career Academy, United Way, Effingham Chamber of Commerce and other community organizations
- SRM team members make a difference in our local community by contributing thousands of hours of service each year

