

## TruLight™ Technology

### High Energy Pilot Ignition And Flame Detection System

The John Zink Hamworthy Combustion TruLight Technology system provides High Energy ignition and flame rod type flame detection in a single compact solution. This unique integration of functions delivers reliable performance and simplifies installation and maintenance. The patented igniter improves ignition even in poor conditions and extends the life of the igniter. In addition, our exclusive Ring of Light indicator communicates the status easily, even at a distance or in dark locations. You get the status you need quickly and without question.

### At A Glance

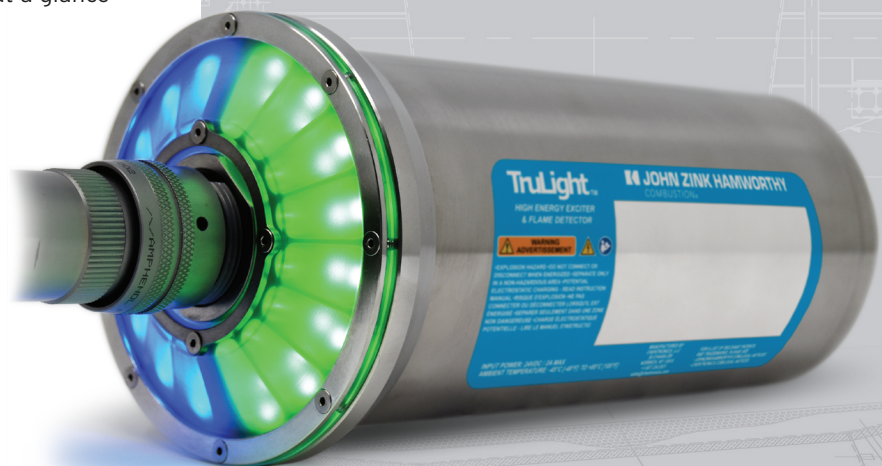
- + Gas pilot ignition through High Energy ignition
- + Immediate flame detection through flame ionization
- + Patented, integrated High Energy igniter and flame rod output provides simultaneous ignition and flame detection at a single point of entry
- + Exclusive Ring of Light indicator quickly relays status at a glance
- + Electronic self-checking ensures fail-safe operation and compliance
- + Compact design for easy installation
- + Quick disconnect for easy installation
- + 4-20mA flame signal strength output
- + Pre-set over/under-temperature protection levels
- + Rated for division 2 and zone 2 hazardous areas

**Put TruLight Technology  
to work for you.**

**Call +1 800 755 4252**



*High Energy ignition and immediate  
flame detection—all in one!  
That's smart. That's JZHC.*



## System Electrical And Physical Specifications

Application	Gas pilot ignition and flame detection system
Power	24VDC nominal, 2A MAX
Electrical Connection	IP66 quick connect, marine grade
Dimensions / Weight	3x3x8 in., 3.7lb
Indicator Light Ring	Indicates status for flame, ignition and faults
Exciter Type	Low Tension High Energy
Exciter Duty Cycle	30 sec on / 2 min off
Exciter Spark Command	INPUT - close wire A to C with relay contact to start exciter
Predictive Igniter Wear Detection	OUTPUT - dry relay contact set, 50VDC, 0.25A
Exciter Power	2J per spark at 5 sparks per second nominal
Flame Detector Type	For rectifying flame rod type installations
Flame Detector Duty	Continuous
Flame Detector Relay	OUTPUT - dry relay contact set, 240VAC, 0.25A
Loss of Flame Response Time	0.7 seconds MAX
Operating Temperature Limits	-45°C to 85°C (-49°F to 185°F)
Storage Temperature Limits	-55°C to 100°C (-67°F to 212°F)
Humidity	0 to 100% condensing
Enclosure	316SS, IP64, NEMA 4X
Approvals	CE, IECEx Zone 2, ATEX Zone 2, cETLus, NEC Class 1 DIV 2



### Global Headquarters

johnzinkhamworthy.com  
+1 918 234 1800

Tulsa, Oklahoma | United States

To locate an office in your region,  
visit [johnzinkhamworthy.com/contacts/office-locator](http://johnzinkhamworthy.com/contacts/office-locator)